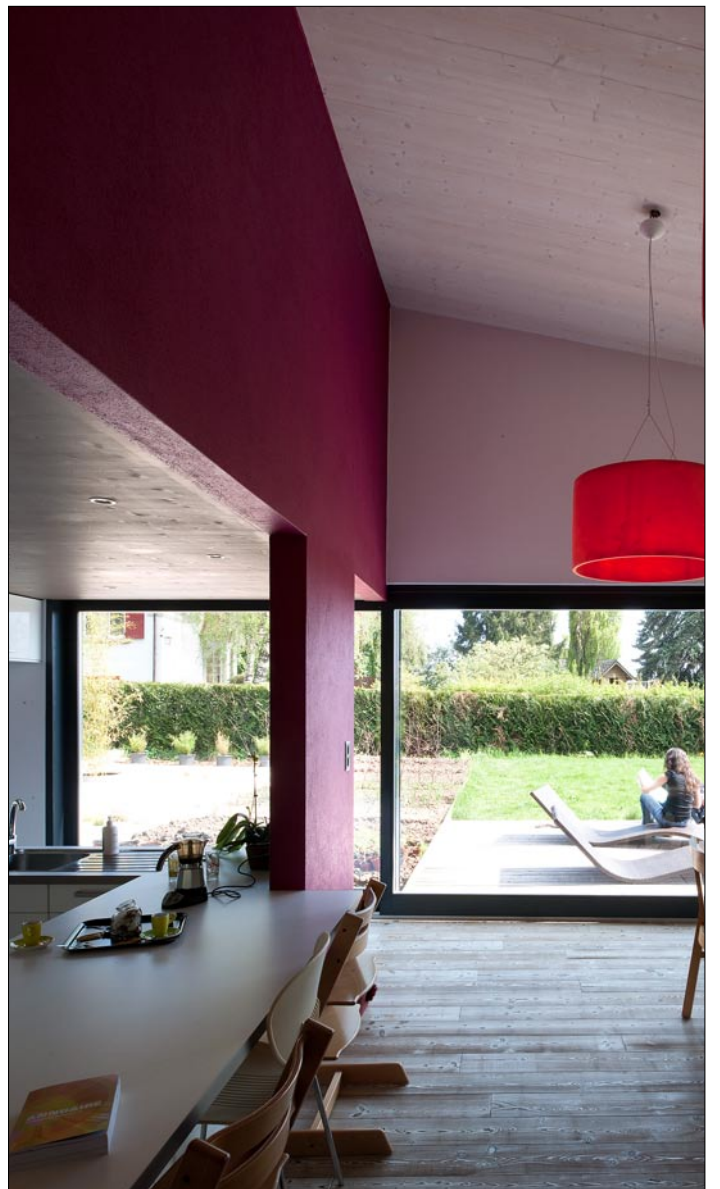
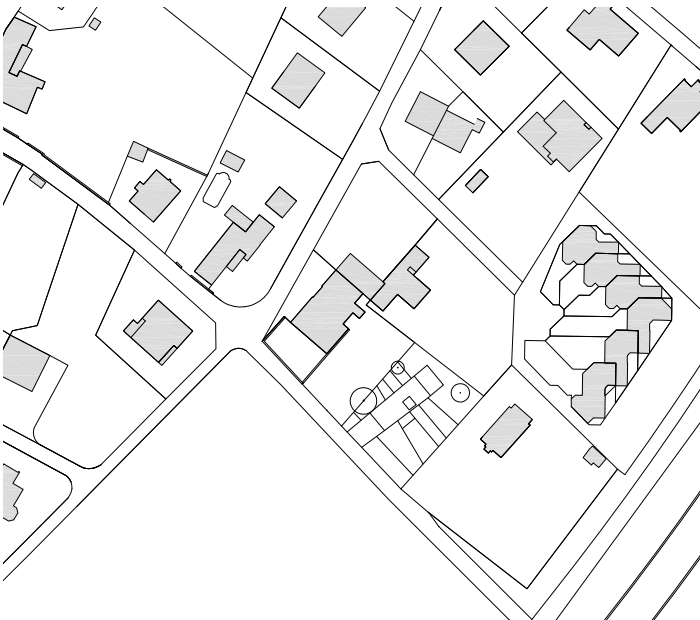




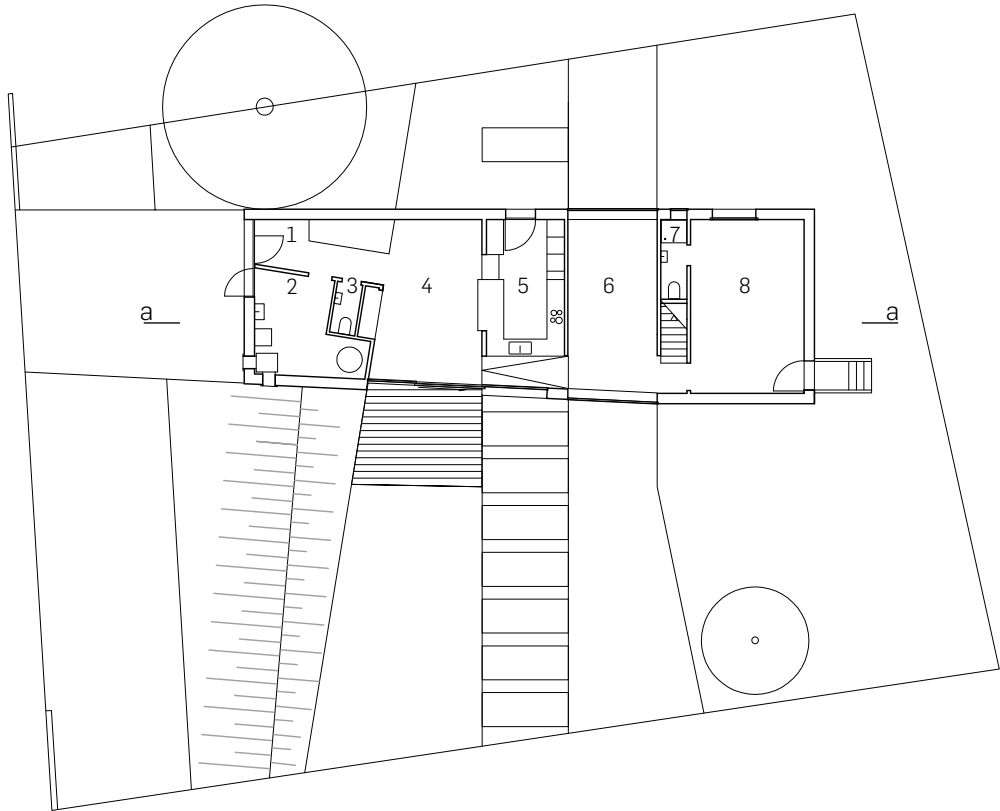
Maison familiale à Bevaix (NE)

1

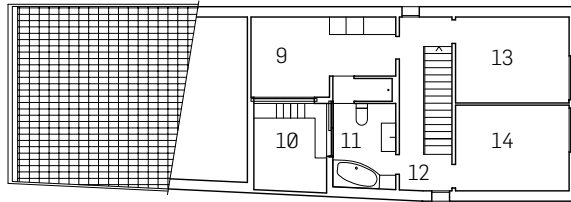


photographies: Thomas Jantscher

## PLANS, COUPES



2

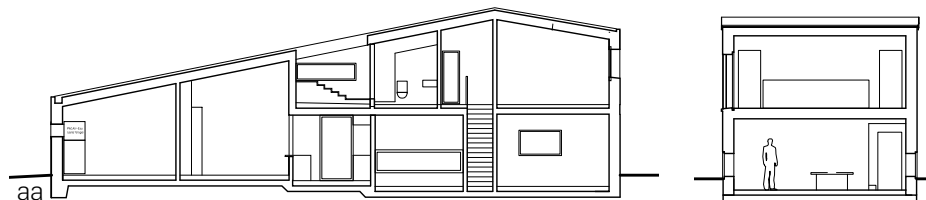


rez-de-chaussée

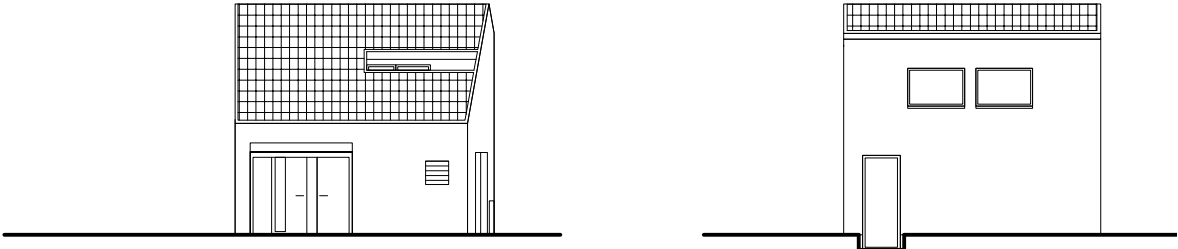
- 1 entrée
- 2 chaufferie / buanderie / cave
- 3 wc
- 4 salle-à-manger
- 5 cuisine
- 6 salon
- 7 wc douche
- 8 salle de danse

étage

- 9 chambre des parents
- 10 patio
- 11 salles de bain
- 12 distribution
- 13 chambre d'enfant 1
- 14 chambre d'enfant 2



ELEVATIONS



3

