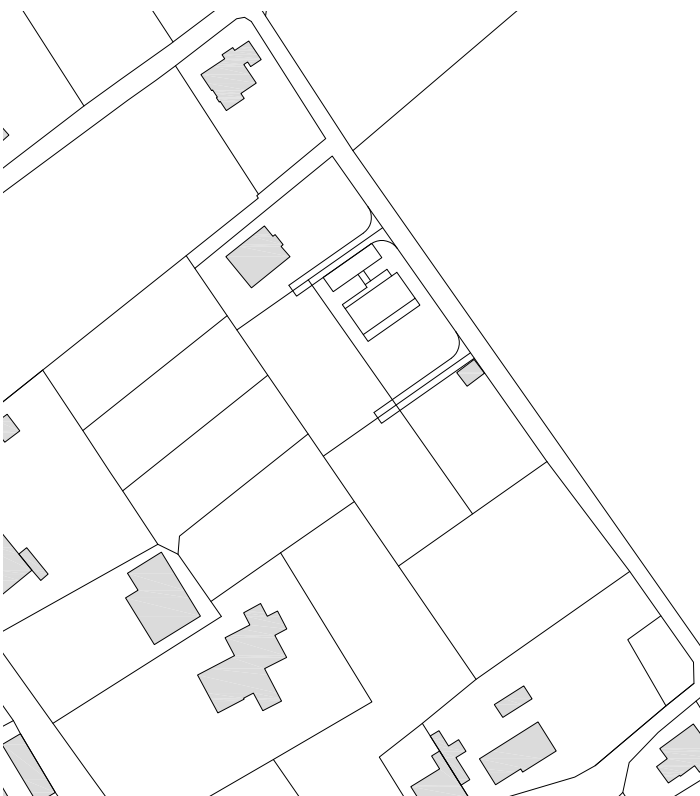


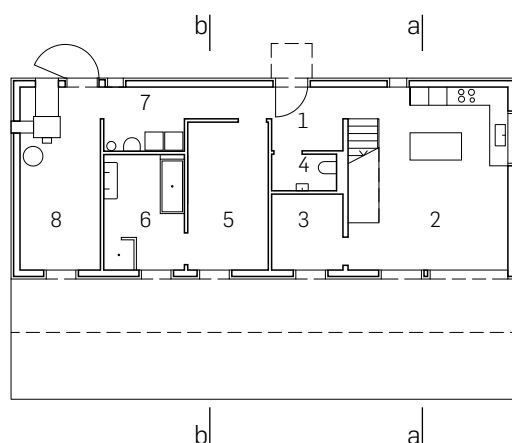


Maison familiale à Montet (VD)

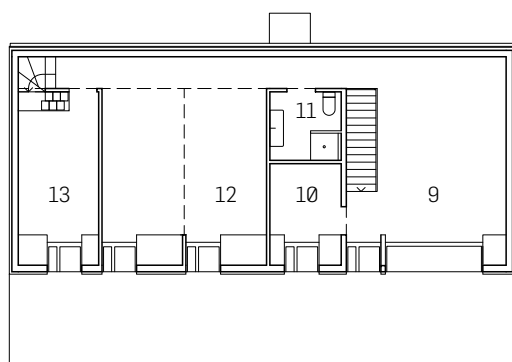
1



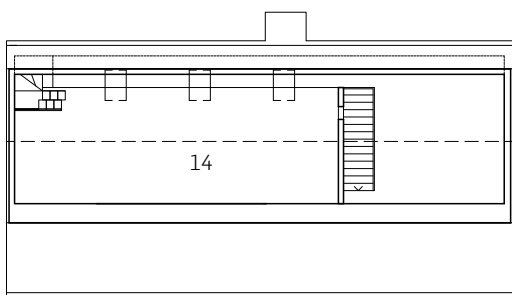
## PLANS



rez-de-chaussée



étage



combles

2

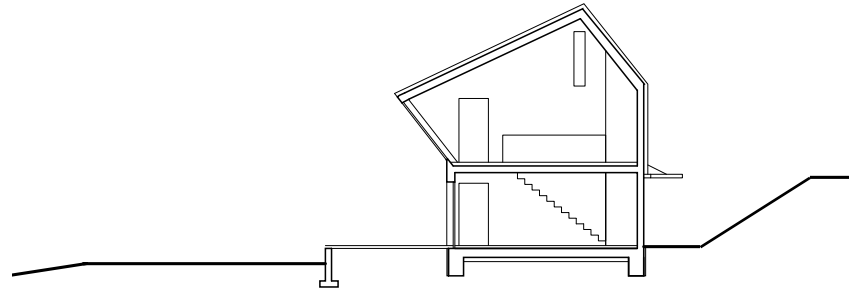
### rez-de-chaussée

- 1 entrée
- 2 salle à manger / cuisine
- 3 local de bricolage
- 4 wc
- 5 chambre parents
- 6 salles de bain parents
- 7 buanderie
- 8 local chaufferie / atelier

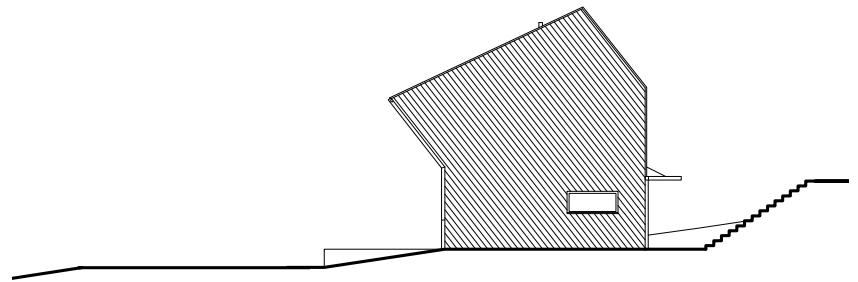
### étages

- 9 salon
- 10 bureau
- 11 salles de bain enfants
- 12 salle de jeu ( divisible )
- 13 chambre d'enfant
- 14 galerie

# COUPE, ELEVATIONS

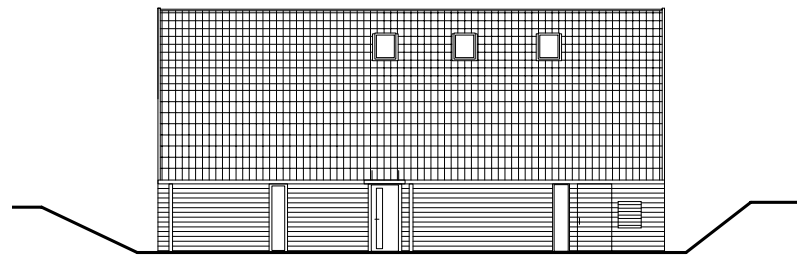


coupe transversale

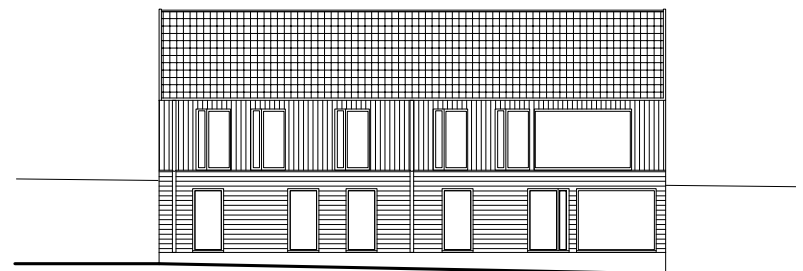


élévation est

3



élévation nord



élévation sud